

Nellis Air Force Base (NAFB) is continuing consultation on the Master Plan and Installation Development Activities, also known as the “Eastside Development,” in accordance with Section 106 (54 U.S.C. § 306108) of the National Historic Preservation Act of 1966 (as amended). NAFB has more precisely defined the Area of Potential Effects (APE) of the undertaking and is proposing a way forward for consultation on this large-scale and multi-year project. Consultation letters on this matter were sent to the State Historic Preservation Office (SHPO) and to the 16 federally recognized Tribes with whom NAFB consults.

NAFB is preparing an Environmental Impact Statement (EIS) in accordance with the National Environmental Policy Act (NEPA) to assess the potential environmental impacts associated with the Master Plan and Installation Development activities on the base. The Proposed Action (Alternative 1) would involve the development of 2,000 acres (with a total of 1,480 acres of impervious surfaces) on the east side of the flightline to include airfield, industrial, and administrative facilities, lodging and residential quarters, community morale and welfare facilities (inclusive of open/green space), and supporting utilities and infrastructure. The Alternative Action (Alternative 2) would be a smaller build-out of 1,486 acres (with a total of 1,216 acres of impervious surfaces), and would not include new lodging facilities, outdoor recreation space, open space, or training space. The footprint of Alternative 2 would fit within that of the Proposed Action; thus, for consultation purposes—and to err on the conservative side—the APE was defined assuming the larger footprint and build-out of the Proposed Action.

The Master Plan and Installation Development is a multi-year project, rolling out over the next decade or two, and the particulars of development are subject to dynamic mission needs and priorities, as well as the funding landscape. It will be, however, subject to the parameters laid out in the EIS, which include the physical footprint of development as well as functional land-use categories proposed for each sector of the footprint. Based on these land-use categories—such as airfield operations and lodging/residential, as well as on the NAFB Installation Facilities Standards, which state that “building heights over 2 stories shall be considered on a case basis,” it is most likely that the tallest structures would be aircraft hangars or residential buildings such as dormitories. Conservatively estimating that such structures would be three to four stories, that gives a maximum height of approximately 60 feet.

In order to ascertain the radius of visual impacts and more precisely define a conservative APE, the Cultural Resources Program Managers took photos from 11 locations on the installation toward the footprint of the Proposed Action, bearing in mind the height assumptions described above. These locations were chosen based on proximity to historic resources (e.g., the potential Red Flag Historic District and the Warfare Center), local topography, the nature of the built environment, and their positions relative to half-mile and mile buffers. As may be expected, the photos show that in open terrain, development on the east side of the flightline would be visible from greater distances, but from developed areas on base, the view toward the Proposed Action is quickly obstructed. The APE determined from this analog viewshed analysis extends to a mile or more in open terrain, includes the first row of buildings west of the flightline, roughly follows the contours of Sunrise Mountain to the east, and is limited to about a half-mile again due to development in the Red Horse campus in Area II. It is situated within Sections 25, 26, and 34-36 of Township 19S Range 62E; Sections 31 and 32 of Township 19S Range 63E; Sections 1-4 and 9-16 of Township 20S Range 62E; and Sections 5-8 of Township 20S Range 63E on the

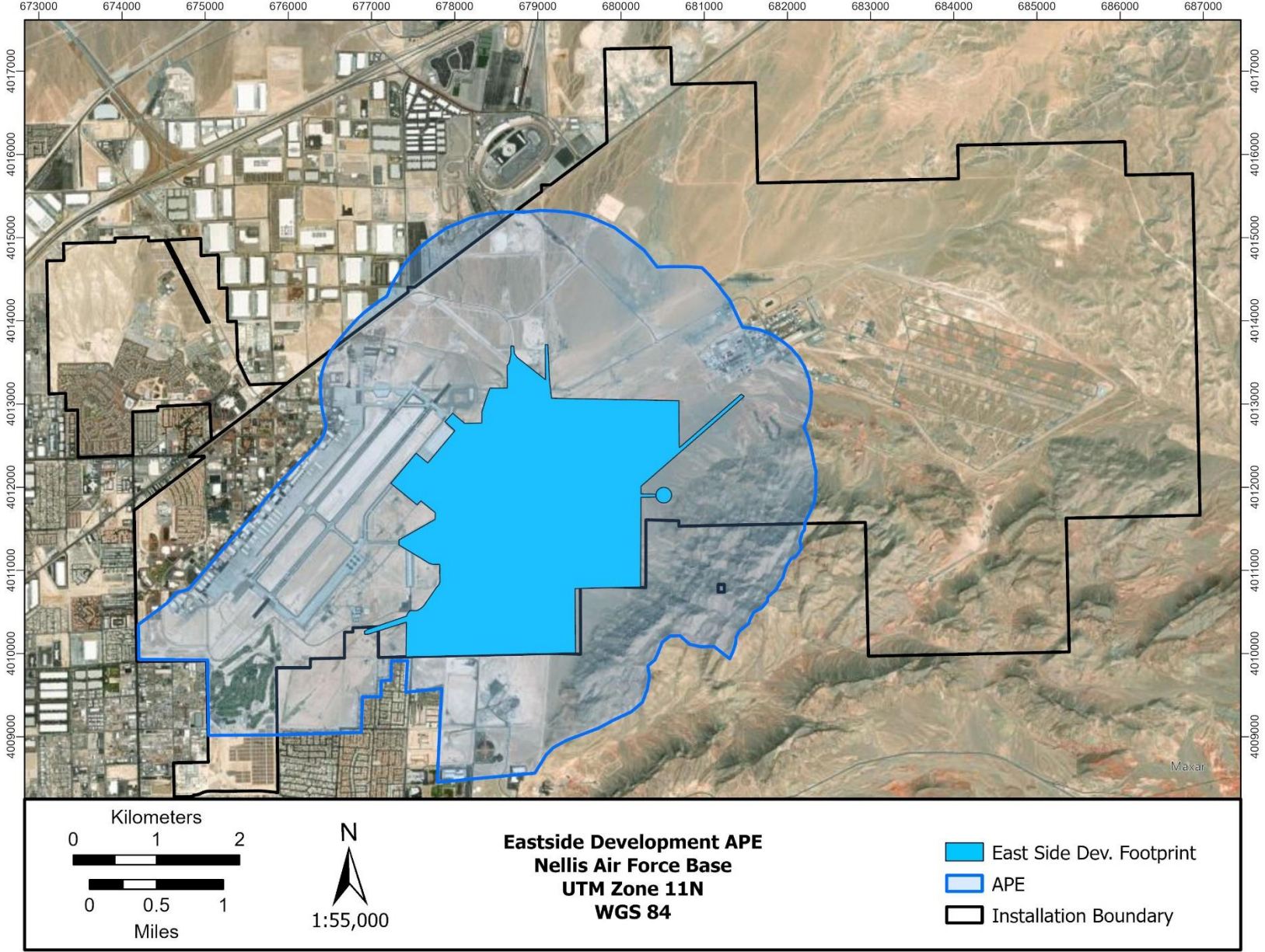
Las Vegas NE, NV (1984), Frenchman Mountain, NV (1983), and Valley, NV (1988) USGS 7.5-minute quadrangle maps.

The APE so defined incorporates the radius of visual effects, as well as atmospheric, auditory, and cumulative effects. Atmospheric and auditory effects are expected to arise primarily from construction activities, which will be piecemeal and temporary. Auditory effects, in particular, are anticipated to be minimal, as the installation already produces a high volume of noise at times due to air traffic. The APE is shown below, and includes the radius of visual, atmospheric, auditory, and cumulative effects, as well as the footprint of physical development (which is assumed to include all ground-disturbing activities, such as staging and bed-down, as well as ingress and egress, which will primarily be via existing roads). NAFB has requested SHPO concurrence with the APE as defined above, with the understanding that NAFB will consult with SHPO on any adjustments to the APE that may be necessitated as details of individual projects are made available.

The entirety of the Proposed Action footprint has been surveyed for archaeological resources. Of the 57 archaeological sites recorded within the APE, 42 have been determined not eligible for listing in the National Register of Historic Places (NRHP) or non-contributing to the eligibility of larger, linear sites (with SHPO concurrence). Three sites were determined eligible but were later mitigated. Eleven sites have not been evaluated for NRHP eligibility or are in-process, and one site (outside of the NAFB installation) has no NRHP status listed in the Nevada Cultural Resource Information System (NVCRIS). The 11 unevaluated sites and the one site with unknown NRHP eligibility status will be treated as eligible for the purposes of this undertaking, unless and until they are evaluated and determined to be not eligible. These 12 sites are listed in **Table 1** below.

**Table 1.**  
**Archaeological Sites Not Evaluated for NRHP Eligibility or with Unknown Status**

<b>Site Number</b>	<b>NRHP Status</b>	<b>Description</b>
26CK11134	Not Evaluated	Refuse Scatter
26CK11135	Not Evaluated	Refuse Scatter
26CK11269	In-Process	Can Scatter
26CK3128	Not Evaluated	Rockshelter; Looted/Vandalized
26CK4950	Unknown	Temporary Camp
S1823	In-Process	Runway 21R/3L (Northwest Runway)
S1824	In-Process	Runway 3R/21L (Southeast Runway)
S1825	In-Process	Main Apron
S1826	In-Process	Historic Terminal Area
S1827	In-Process	Live Ordinance Loading Area (LOLA)
S2797	In-Process	Las Vegas Speedway
S2847	Not Evaluated	Ellsworth Road



There is a total of 104 buildings and structures within the APE, of which 76 have been determined not eligible for listing in the NRHP, or non-contributing to the eligibility of larger, linear sites (with SHPO concurrence). Eight buildings and structures have been determined eligible and 20 are unevaluated or in-process but will be treated as eligible for the purposes of this undertaking unless otherwise evaluated in the interim. These 28 buildings and structures are listed in **Table 2**.

**Table 2.**  
**Buildings NRHP Eligible or Not Evaluated**

<b>NAFB Bldg. No.</b>	<b>SHPO Bldg. No.</b>	<b>NRHP Status</b>	<b>Concur Date</b>	<b>Description</b>
220	15936	Eligible	19 June 2020	Maintenance Dock
222	13548	Eligible	5 January 2015	Maintenance Dock
224	13549	Eligible	5 January 2015	Maintenance Dock
226	13550	Eligible	5 January 2015	Maintenance Dock
228	13551	Eligible	5 January 2015	Aircraft Maintenance Shop
282	13558	Eligible	5 January 2015	Flight Training Classroom
292	13561	Eligible	5 January 2015; 14 June 1991	Thunderbirds Museum
805	Unknown	Eligible	14 June 1991	Base Operations (old McCarran Field Air Terminal)
235	N/A	Not Evaluated	N/A	Petroleum Operations Building
250	N/A	Not Evaluated	N/A	Aircraft Maintenance Shop
271	N/A	Not Evaluated	N/A	Aircraft Wash Rack
295	N/A	Not Evaluated	N/A	Squadron Operations
846	N/A	Not Evaluated	N/A	Water Fire Pumping Station
1621	N/A	Not Evaluated	N/A	Recreation Pavilion
2060	N/A	Not Evaluated	N/A	Tactical Air Navigation Station
2067	N/A	Not Evaluated	N/A	Squadron Operations
2215	N/A	Not Evaluated	N/A	Base Hazardous Storage
2216	N/A	Not Evaluated	N/A	Water Fire Pumping Station
2350	N/A	Not Evaluated	N/A	Navigational Aids Shop
2352	N/A	Not Evaluated	N/A	Electric Power Station
2353	N/A	Not Evaluated	N/A	Instrument Landing System Localizer
10106	N/A	Not Evaluated	N/A	Water Supply Building
10107	N/A	Not Evaluated	N/A	Water Pump Station
10300	N/A	Not Evaluated	N/A	Entry Control Building
10619	N/A	Not Evaluated	N/A	Operations Support Shed
61633	N/A	Not Evaluated	N/A	Power Check with Suppressor
61634	N/A	Not Evaluated	N/A	Engine Test Shop and Storage Depot
61637	N/A	Not Evaluated	N/A	Power Check with Suppressor

Due to the nature of the Master Plan and Installation Development as a long-term undertaking subject to changing mission requirements and funding, and with few concrete details of development at present—save for the footprint and functional landuse category guidelines in the EIS—NAFB proposes a programmatic approach to consultation on this undertaking, in which the determination of the APE is revisited *if necessary* and consultation on determination of effect (36 CFR §§ 800.4(d) and 800.5) is conducted on a project-by-project basis.

Feedback on the Interagency/Intergovernmental Coordination for Environmental Planning (IICEP) letter as pertains to cultural resources was received from the National Park Service National Trails Office in November of 2023. The letter stated that the Old Spanish National Historic Trail intersects NAFB lands and requested that the trail be taken into consideration in the analysis of impacts. Upon consulting a historic GLO survey plat map from 1882, it was apparent that the road most likely corresponding to the Old Spanish Trail followed a route to the west and outside of the APE, and mostly outside of current installation boundaries. Furthermore, no site corresponding to the Old Spanish Trail has been recorded in surveys of the APE. Nonetheless, the updated specifications of the APE as described in this consultation letter will also be sent concurrently to the National Park Service and any further feedback from their office will be forwarded to SHPO.

Initial consultation letters regarding the Master Plan and Installation Development were sent to the 16 federally recognized Native American Tribes with whom NAFB consults on 29 March 2023. IICEP letters were similarly sent to the Tribes in October of 2023. Additionally, the Eastside Development and a small, remaining survey of a section of the APE was discussed at the annual Native American Program Meeting at NAFB on 24 October 2023. Feedback was received, asking for Tribes to be invited to participate in the survey and consulted on resources within the APE. An email was sent to Tribes on 20 March 2024 inviting any interested members to participate in the survey, which took place on 4 April 2024. Unfortunately, no Tribal members were able to attend. A copy of the negative inventory report from that survey, along with a consultation letter on this matter was sent to the Tribes on 27 August 2024.

The public has previously been informed of this undertaking through the NEPA process and was invited to a public scoping meeting held on 14 and 15 November 2023. No feedback has been received from the public on matters of cultural resources. Information on the APE for this undertaking, as well as identification of historic resources, will be included in the EIS, which will be made available to the public.

If you have any questions or concerns regarding this undertaking, please contact the Cultural Resources Program at Nellis Air Force Base via email at [99ces.culturalresources@us.af.mil](mailto:99ces.culturalresources@us.af.mil).